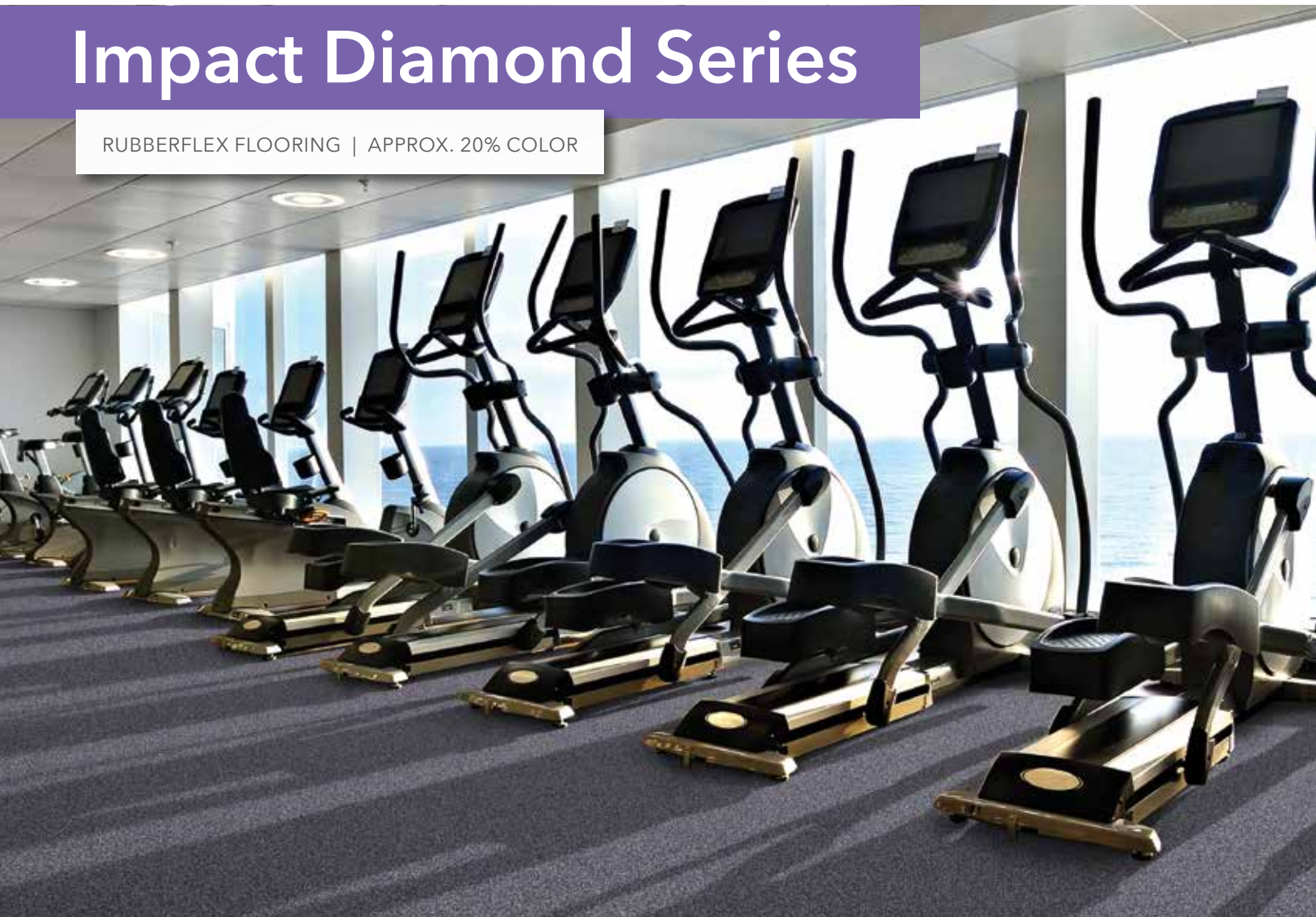


Impact Diamond Series

RUBBERFLEX FLOORING | APPROX. 20% COLOR



Suitable for indoor applications in areas that require resilience, sound absorption, spike resistance and traction.

Impact Diamond Series recycled rubber flooring is created with more color than our Gold Series. Wear resistant, our Impact Diamond Series is your choice for gym floors.

Our Diamond Series has eight colors that offer the most widely accepted color density.



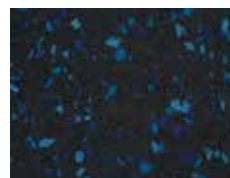
01. Titan Grey RFX-512



02. Snow Flakes RFX-511



03. Blue Sparkle RFX-507



04. Blue Pool RFX-528



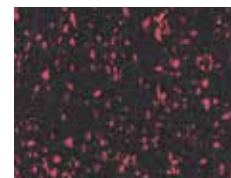
05. Crushed Nuts RFX-508



06. Gold Rush RFX-529



07. Orange RFX-527



08. Canned Heat RFX-509



Your Source for
Commercial Fitness Flooring
(707) 823-4455 • www.langhornfci.com



Impact Diamond Series



RUBBERFLEX FLOORING | APPROX. 20% COLOR

SUGGESTED USES

Weight Rooms, Home Gyms, Fitness Centers, Health Clubs, Recreation Centers, Golf Shops and Golf Courses, Schools and Universities, Play Areas, Day Care Centers, Fire and Police Stations, Physical Therapy Centers, Ice skating facilities, etc.

Construction (ISO 2424):

SBR Rubber Black + 20% Color EPDM/Recycled Rubber

Density (ASTM D3676): 60 pcf - 80 pcf

Hardness (ASTM D2240 (Shore A): 60 ± 5

Tear Strength (ASTM D624): 70pli - 80 pli min.

Elongation (ASTM D412): > 145% - 300%

Tensile Strength (ASTM D412): 200 psi - >220psi

Flexibility (ASTM F137 1/4" Mandrel): Pass

Resistance to Chemicals (ASTM F825): No Change

Force Reduction (ASTM F2772) 12.9% - 13.7%

Energy Restitution (ASTM F2772) 85% - 86%

Abrasion Resistance (ASTM D3389) <1.7g. 1000 cycles

Static Load Limit (ASTM F970) 0.001' @ 250 PSI

Coefficient of Friction (ASTM D2047) >0.95

Slip Resistance (ASTM F2772) Pass

VOC Compliant (ASTM D6116 / CA 1350) Yes

Rolling Load (EN1569) Pass

Resistance to Impact (EN1517) 14 N/m

Resistance to Indentation (EN1516) 0.1mm

Vertical Deformation (ASTM F2772) 1.4mm

Indoor Air Quality (CA Spec 01350): Pass

Coefficient of Friction (ASTM D2047): > 0.96

PACKING & DIMENSIONS

Size	Colors	Thickness
Roll Goods 4' wide x 95' long (Standard: 4' x 50' roll)	Titan Grey RFX-512, Snow Flakes RFX-511, Blue Sparkle RFX-507, Blue Pool RFX-528, Crushed Nuts RFX-508, Gold Rush RFX-529 Canned Heat RFX-509, Orange RFX-527	9mm (3/8") Thick
Roll Goods 4' wide x 95' long (Standard: 4' x 50' roll)	Only Orange, Green, Tan (all mixed w/ white)	12mm (1/2") Thick
Square Tile 23" x 23"	All Colors available except Orange, Green and Tan (mixed with white)	9mm (3/8") Thick @ 3.67 sq. ft. / Tile 500 sq. ft. minimum order (@137 tiles)
Interlocking Tile 23" x 23"	Orange, Green and Tan (all mixed with white)	9mm (3/8") Thick @ 3.67 sq. ft. / Tile (@153 interlocking)

LEED-NC

MR Credit 4 | IEQ Credits 4.1, 5

MAINTENANCE

For maintenance visit www.vangelder-inc.com

IMPORTANT NOTICE

Sample swatches have been cut from an overall design; decoration and shade may vary.

LIMITED WARRANTY

Full Commercial Warranty

5 years

Summary of Warranty

Products must be professionally installed to validate the warranty.

Langhorn Flooring Concepts (LFC) warrants Rubberflex Impact Diamond Series Sheet/Roll Goods against wear for a period of 5 years in a commercial application. This warranty applies only to material that is properly installed and maintained, while being used as intended and recommended. If the defect is covered by this warranty and is reported to LFC within the warranty period, LFC will supply new material of same or similar grade to repair or replace the defective material.

- Wear**
 Defined as complete removal of wear layer, pattern and color due to wear from normal traffic and maintenance. If the wear occurs within 5 years from date of purchase, LFC will provide replacement materials or repair, of only the effected area.
- Manufacturing Defects**
 LFC warrants Rubberflex Impact Diamond Series materials are free from manufacturing defects and will replace defective floor covering and reasonable installation costs for a period of up to one [1] year from date of purchase. LFC will not pay labor costs to repair or replace materials that defects were apparent before or at the time of installation.
- Other Limitations**
 - This warranty is non-transferable.
 - Manufacturing defect must be reported within 3 months from date of purchase.
 - This warranty covers only properly installed & maintained floors.
 - LFC excludes and will not pay for any consequential or incidental expenses.
 - LFC reserves the right of final judgment and may refuse claims in certain instances.

*For a copy of the full warranty please ask for a warranty sheet

INITIAL CLEANING

Do not wash floor for at least 5 days after installation. An initial cleaning needs to be done to remove any dirt and grit from the job site and to prepare the floor prior to applying a sealer or finish. Failure to clean properly will cause finish bonding issues as well as the entrapment of dirt in the floor.

To avoid possible damage to the flooring, the following should never be used on the floor:

- Steel wool or abrasive brushes
- Abrasive or alkaline cleaners
- Solvents of any type

YOUR AUTHORIZED SALES REPRESENTATIVE:

LFC_IMPACTDIAMOND_050621

