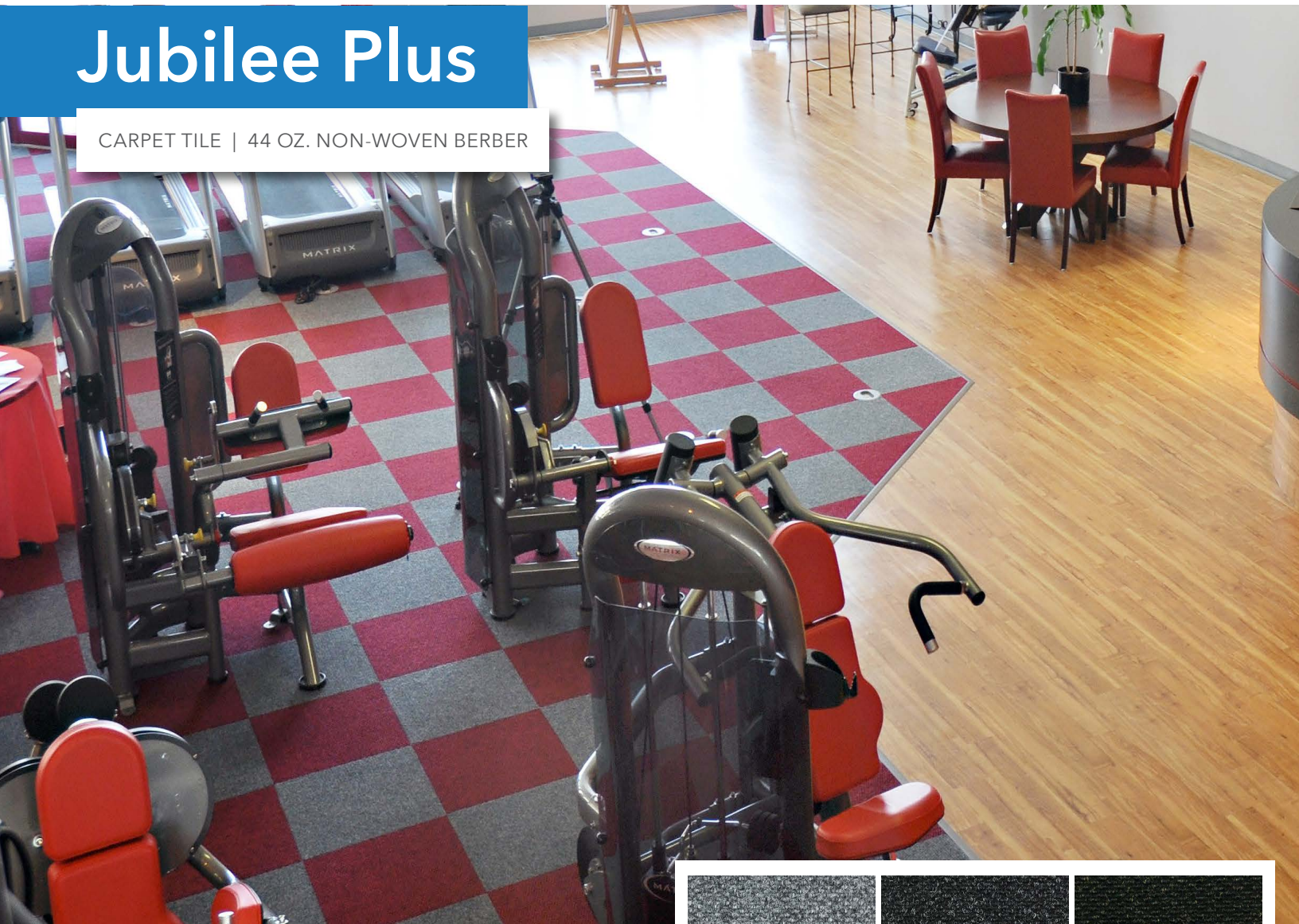


Jubilee Plus

CARPET TILE | 44 OZ. NON-WOVEN BERBER



Offering signature performance in medium to high-traffic areas.

Ideally suited for designers looking for style & practicality, this heavy material has a "cobble" construction. If you're looking for an easy to fit, high wearing product, Jubilee Plus is your floorcovering answer.



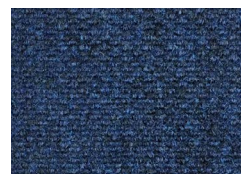
01. Grey 2344



02. Coal 907



03. Raven 2343



04. Harbor 5181



05. Dark Blue 5154



04. Dark Green 6265



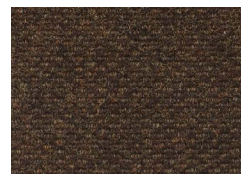
06. Bisque 1099



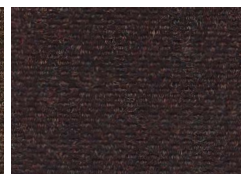
07. Beige 1153



08. Java 912



09. Russet 1244



10. Merlot 7178



11. Red 3353

Langhorn
Flooring Concepts

Your Source for
Commercial Fitness Flooring
(707) 823-4455 • www.langhornfci.com

Jubilee Plus

CARPET TILE | 44 OZ. NON-WOVEN BERBER



indoor only

SUGGESTED USES (Not limited to)

Office Environments, Airports, Conference Rooms, Lobbies, Libraries, Retail/ Department Stores, Resorts, Restaurant Entryways, Spas, etc.

Construction:	Nonwoven Hobnail (Berber) pattern
Fiber:	100% solution-dyed UV stabilized ASOTA* polypropylene
Primary Backing:	Premium (eco) Bitumen
Pile Height (± 0.5mm):	0.20"
Total Height (± 7.5%):	0.47"
Pile Weight (± 7.5%):	44 oz/sy
Total Weight (± 7.5%):	172 oz/sy
Tile Size (± 2%):	19.69" x 19.69"

LIMITED WARRANTY

Full Commercial Warranty 5 years

Summary of Warranty:

Langhorn Flooring Concepts Inc. warrants Jubilee Plus Carpet Tiles against wear for a period of 5 years in a commercial application. This warranty applies only to material that is properly installed and maintained, while being used as intended and recommended. If the defect is covered by this warranty and is reported to Langhorn Flooring Concepts Inc. within the Warranty period, Langhorn Flooring Concepts Inc. will supply new material of same or similar grade to repair or replace the defective material. Wear

Defined as complete removal of wear layer, pattern and color due to wear from normal traffic and maintenance. If the wear occurs within 1 year from date of purchase, Langhorn Flooring Concepts Inc. will provide replacement materials or repair, of only the effected area.

Manufacturing Defects:

Langhorn Flooring Concepts Inc. warrants Jubilee Plus Carpet Tiles materials are free from manufacturing defects and will replace defective floor covering and reasonable installation costs for a period of up to five [5] years from date of purchase. Langhorn Flooring Concepts Inc. will not pay labor costs to repair or replace materials that defects were apparent before or at the time of installation.

Other Limitations:

- This warranty is non-transferable
- Manufacturing defect must be reported within 3 months from date of purchase.
- This Warranty covers only properly installed & maintained floors
- Langhorn Flooring Concepts Inc. excluded and will not pay for any consequential or incidental expenses.

Langhorn Flooring Concepts Inc. reserves the right of final judgment and may refuse claims in certain instances.

*For a copy of the full warranty please ask for a warranty sheet

PACKAGING & DIMENSIONS

Tiles (19.69" x 19.69" ea.): 12 tiles per box (32.5 sq. ft.)

ELECTROSTATIC PROPERTIES

Dimensional Stability (EN 986):	Pass
Electrostatic Propensity (EN 1815):	>2kV
Electrical Resistivity (IBM / ICL):	Pass, for R.H. ≥40%
Sound Insulation (ISO 10140-1:2010):	≥24dB
Thermal Retention (ISO 11092):	0.13 m K/W Pass

COLOR FASTNESS

To Light (ISO 105 B02):	5
To Water (ISO 105 E01):	5
To Shampoo (ISO 105 C06):	5
To Rubbing (ISO 105 X12):	4-5 (Dry/Wet)

FLAMMABILITY

Radiant Panel (ASTM E648):	Class II
Smoke Density (ASTM E662):	Pass
Surface Flammability (FF 1-70 / ASTM D2859):	Pass

LEED-NC

MR Credit:	4
IEQ Credits:	4.1, 4.3, 5

INSTALLATION (Tile)

Before laying tiles, it is recommended they are stored at room temperature 60°F-70°F (15°C-20°C). The tiles can be loose laid on flat, dry floors free from impurities such as oil, grease etc. Cracked floors should be filled, and uneven floors covered with hardboard. Dusty floors should be primed. Because of the high insulation value of these tiles it is not recommended they be laid when under-floor heating systems are in use. On very large installations, it is advisable to secure 1 in 5 rows with double-sided tape Where tiles are to be used under caster chairs, tiles should be fully secured. The tiles may be laid by marking across in the center of the room and working outwards from this, the marker cross may be moved to facilitate these of full tiles in doorways, etc. Tiles must be laid by turning alternate tiles through 90 degrees to obtain a checker pattern. An arrow on the back of each tile indicates the pile direction. Only tiles with the same batch number should be laid together.

MAINTENANCE

Regular vacuuming (Weekly in low-traffic areas, and daily or twice daily in areas with higher traffic) with a motor-driven brush and beater bar can remove up to 80% of surface dirt, and is the easiest way to prolong the life of your carpet.

Regular vacuuming is key to maintaining your carpet, but eventually the carpet color dulls from dirt and grime stuck in the fibers. The dirt is then carried further into the building to form more soil reservoirs. Additionally, the oil content (15%) of the soil causes particles to stick to carpet fiber and resist vacuuming. To restore the carpet to its best condition, frequent light cleaning gives the best result and is often very cost effective

IMPORTANT NOTICE

Sample swatches have been cut from an overall design; decoration and shade may vary.

YOUR AUTHORIZED SALES REPRESENTATIVE:



Langhorn
Flooring Concepts