

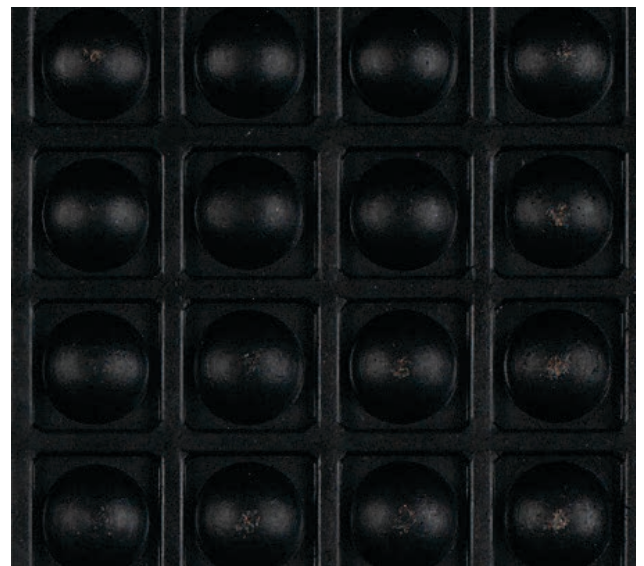
# Air-Bubble Mat

ANTI-FATIGUE MATTING | 1/2" MOLDED RUBBER

The Air-Bubble Mat is a long-lasting anti-fatigue mat that performs best in tough work environments.

Your workers are your most important assets; keeping them safe and comfortable increases productivity and reduces safety and injury risks. Bubble Mat's 12.7mm-thick moulded bubble rubber construction provides a supportive and resilient surface designed to reduce standing pressure on joints, allowing workers to stand comfortably for longer. Bubble Mat is a long lasting anti-fatigue mat that performs best in tough work environments.

- Beveled edges increase safety by reducing potential tripping and slipping.
- Air pockets provide timeless comfort.
- Grease/Oil resistant



01. Black

# Air-Bubble Mat



ANTI-FATIGUE MATTING | 1/2" MOLDED RUBBER

## SUGGESTED USES

Pharmacies, Check-out Counters, Waiting Area, Industrial Area, Building Reception Area, Hostess Station, etc.

Construction: 100% Black Molded Rubber  
Surface Aspect: Air Pocket "Bubble" Design

## LIMITED WARRANTY

Full Commercial Warranty 1 year

### Summary of Warranty

Products must be professionally installed to validate the warranty. Langhorn Flooring Concepts Inc. (LFCI) warrants Bubble Anti-Fatigue Mat against wear for a period of 5 years in a commercial application. This warranty applies only to material that is properly installed and maintained, while being used as intended and recommended. If the defect is covered by this warranty and is reported to LFCI within the Warranty period, LFCI will supply new material of same or similar grade to repair or replace the defective material.

- **Wear**  
Defined as complete removal of wear layer, pattern and color due to wear from normal traffic and maintenance. If the wear occurs within 5 years from date of purchase, LFCI will provide replacement materials or repair, of only the effected area.
- **Manufacturing Defects**  
LFCI warrants Bubble Anti-Fatigue Mat materials are free from manufacturing defects and will replace defective floor covering and reasonable installation costs for a period of up to one [1] year from date of purchase. LFCI will not pay labor costs to repair or replace materials that defects were apparent before or at the time of installation.
- **Other Limitations**
  - This warranty is non-transferable
  - Manufacturing defect must be reported within 3 months from date of purchase.
  - This Warranty covers only properly installed & maintained floors
  - LFCI excluded and will not pay for any consequential or incidental expenses.
  - LFCI reserves the right of final judgment and may refuse claims in certain instances.

\*For a copy of the full warranty please ask for a warranty sheet

## TECHNICAL SPECIFICATIONS

Gauge ( $\pm 0.05"$  (1.27mm)): 1/2" (12.7mm)  
Durometer (ASTM D2240): 85 ( $\pm 15$  average)  
Weight: 1.85 lbs/sq. ft. (9.032 kgf/m<sup>2</sup>)  
Available Widths ( $\pm 0.5"$  (12.7mm)): 2' (60.96cm), 3' (91.44cm)  
Available Lengths ( $\pm 0.5"$  (12.7mm)): 3' (91.44cm), 4' (121.92cm)

AVAILABLE SIZE: 2' x 3' | 3' x 4'

## IMPORTANT NOTICE

Sample swatches have been cut from an overall design; decoration and shade may vary.

## NOTES:

---

---

---

---

---

---

---

---

---

---

---

---

---

---

---

---

---

---

---

---

---

---

---

---

## YOUR AUTHORIZED SALES REPRESENTATIVE:

LFC\_BUBBLEMAT\_100521