

# Impact Gold Series

RUBBERFLEX FLOORING | APPROX. 10% COLOR

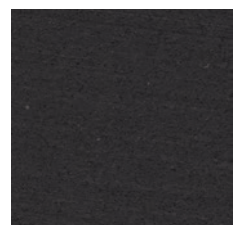


## A classic combination of performance and value.

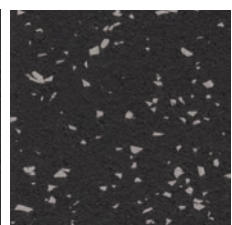
Impact Gold Series recycled rubber flooring is a heavy duty commercial rolled rubber flooring, and is the highest quality rubber gym flooring available.

The Gold Series provides RubberFlex "Impact" an economically priced option with all the benefits and quality of the total "Impact" series in ten colors.

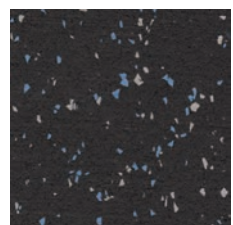
- Versatile and customizable recycled rubber flooring
- Our rubber flooring is FloorScore Certified
- Superior slip resistance in wet or dry conditions
- Virtually seamless
- Provides shock absorption and noise reduction



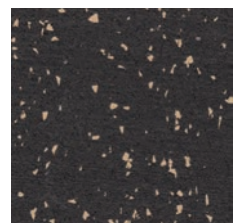
01. Jet Black RFX-521



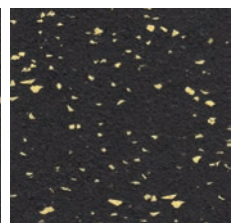
02. Night Fly RFX-517



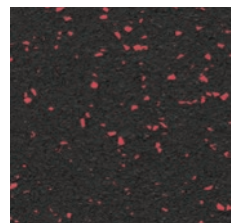
03. Earth Fragments RFX-513



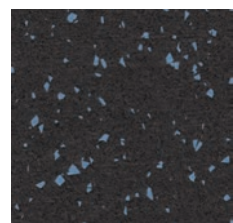
04. Tan Clay RFX-519



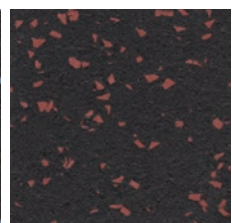
05. Yellow Moon RFX-520



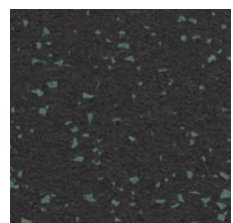
06. Bright Red RFX-530



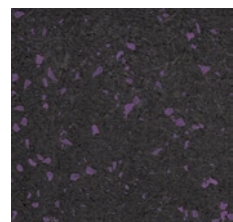
07. True Blue RFX-514



08. Terra Cotta RFX-515



09. Leprechaun RFX-516



10. Purple Rain RFX-518

# Impact Gold Series

RUBBERFLEX FLOORING | APPROX. 10% COLOR



## SUGGESTED USES

Weight Rooms, Home Gyms, Fitness Centers, Health Clubs, Recreation Centers, Golf Shops and Golf Courses, Schools and Universities, Play Areas, Day Care Centers, Fire and Police Stations, Physical Therapy Centers, Ice skating facilities, etc.

Construction (ISO 2424):

SBR Rubber Black + 10% Color EPDM/Recycled Rubber

Density (ASTM D3676):	60 pcf - 80 PCF
Hardness (ASTM D2240 (Shore A):	60 ± 5
Tear Strength (ASTM D624):	70pli - 80 Pli min.
Elongation (ASTM D412):	> 145% - 300%
Tensile Strength (ASTM D412):	200 PSI - >220PSI
Flexibility (ASTM F137 1/4" Mandrel):	Pass
Resistance to Chemicals (ASTM F825):	No Change
Force Reduction (ASTM F2772)	12.9% - 13.7%
Energy Restitution (ASTM F2772)	85% - 86%
Abrasion Resistance (ASTM D3389)	<1.7g. 1000 cycles
Static Load Limit (ASTM F970)	0.001' @ 250 PSI
Coefficient of Friction (ASTM D2047)	>0.95
Slip Resistance (ASTM F2772)	Pass
VOC Compliant (ASTM D6116 / CA 1350)	Yes
Rolling Load (EN1569)	Pass
Resistance to Impact (EN1517)	14 N/m
Resistance to Indentation (EN1516)	0.1mm
Vertical Deformation (ASTM F2772)	1.4mm
Indoor Air Quality (CA Spec 01350):	Pass
Coefficient of Friction (ASTM D2047):	> 0.96

## PACKING & DIMENSIONS

Size	Colors	Thickness
Roll Goods 4' wide x 95' long (Standard: 4' x 50' roll)	Only Jet Black RFX-521, Night Fly RFX-517 and True Blue RFX-514	4mm (3/8") Thick 6mm (1/4") Thick 8mm (5/16") Thick 9mm (3/8") Thick 12mm (1/2") Thick
Roll Goods 4' wide x 95' long (Standard: 4' x 50' roll)	Only Tan Clay RFX-519, Earth Fragments RFX- 513, Bright Red RFX- 530 and Terra Cotta RFX-515	8mm (5/16") Thick 9mm (3/8") Thick
Roll Goods 4' wide x 95' long (Standard: 4' x 50' roll)	Only Yellow Moon RFX-520, Leprechaun RFX-516, Bright Red RFX-530 and Purple Rain RFX-518	9mm (3/8") Thick
Square Tile 23" x 23"	Only Yellow Moon RFX-520, Leprechaun RFX-516, Bright Red RFX-530 and Purple Rain RFX-518	9mm (3/8") Thick @ 3.67 sq. ft. / Tile 500 sq. ft. minimum order (@137 tiles)
Square Tile 24" x 24"	Only Jet Black RFX-521, Night Fly RFX-517, True Blue RFX-514 Tan Clay RFX-519, Terra Cotta RFX-515	9mm (3/8") Thick @ 4 sq. ft. / Tile
Interlocking Tile 23" x 23"	Only Yellow Moon RFX-520, Leprechaun RFX-516, Bright Red RFX-530 and Purple Rain RFX-518	9mm (3/8") Thick @ 3.67 sq. ft. / Tile 500 sq. ft. minimum order (@137 tiles)
Interlocking Tile 24" x 24"	Only Jet Black RFX-521, Night Fly RFX-517, True Blue RFX-514 Tan Clay RFX-519, Terra Cotta RFX-515	9mm (3/8") Thick @ 3.2 sq. ft. / Tile

## LEED-NC

MR Credit 4 | IEQ Credits 4.1, 5

## MAINTENANCE

For maintenance visit [www.langhornfci.com](http://www.langhornfci.com)

## IMPORTANT NOTICE

Sample swatches have been cut from an overall design; decoration and shade may vary.

## LIMITED WARRANTY

Commercial Warranty

Full  
5 years

## Summary of Warranty

Products must be professionally installed to validate the warranty. Langhorn Flooring Concepts (LFC) warrants Rubberflex Impact Diamond Series Sheet/Roll Goods against wear for a period of 5 years in a commercial application. This warranty applies only to material that is properly installed and maintained, while being used as intended and recommended. If the defect is covered by this warranty and is reported to LFC within the warranty period, LFC will supply new material of same or similar grade to repair or replace the defective material.

## Wear

Defined as complete removal of wear layer, pattern and color due to wear from normal traffic and maintenance. If the wear occurs within 5 years from date of purchase, LFC will provide replacement materials or repair, of only the effected area.

## Manufacturing Defects

LFC warrants Rubberflex Impact Diamond Series materials are free from manufacturing defects and will replace defective floor covering and reasonable installation costs for a period of up to one [1] year from date of purchase. LFC will not pay labor costs to repair or replace materials that defects were apparent before or at the time of installation.

## Other Limitations

- This warranty is non-transferable.
- Manufacturing defect must be reported within 3 months from date of purchase.
- This warranty covers only properly installed & maintained floors.
- LFC excludes and will not pay for any consequential or incidental expenses.
- LFC reserves the right of final judgment and may refuse claims in certain instances.

\*For a copy of the full warranty please ask for a warranty sheet

## INITIAL CLEANING

Do not wash floor for at least 5 days after installation. An initial cleaning needs to be done to remove any dirt and grit from the job site and to prepare the floor prior to applying a sealer or finish. Failure to clean properly will cause finish bonding issues as well as the entrapment of dirt in the floor. To avoid possible damage to the flooring, the following should never be used on the floor:

- Steel wool or abrasive brushes
- Abrasive or alkaline cleaners
- Solvents of any type

## YOUR AUTHORIZED SALES REPRESENTATIVE:

LFC\_IMPACTGOLD\_101121

