

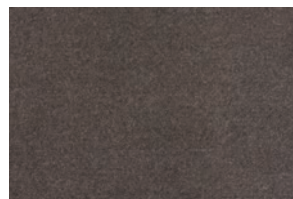
Olefin Mat

COMMERCIAL MATTING | OLEFIN TUFTED YARN

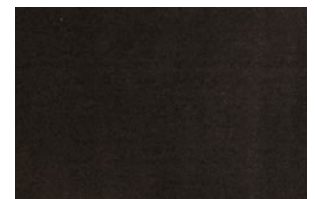


With a broad selection of colors, Olefin Mats offer a lush look and feel at a bargain price.

Olefin mats are the economical choice when it comes to entry mats. They have a surface that absorbs water & dirt from shoes, whilst keeping your floors clean. Made with 100% Olefin fibers for a luxurious feel, solution dyed to prevent fading, and backed with non-slip vinyl, these mats are perfect for your entryway.



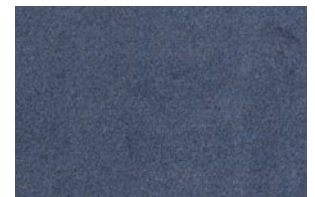
01. Grey



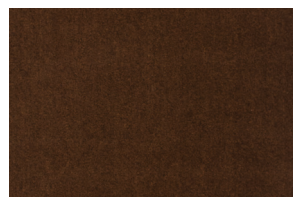
02. Smoke



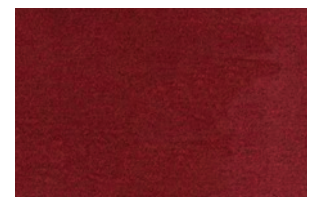
04. Beige



03. Blue



05. Brown



06. Red

Olefin Mat



INDOOR ENTRY MATTING | OLEFIN TUFTED YARN

SUGGESTED USES

Indoor entryways or other high-traffic areas with no mat well.

Construction:	Olefin tufted yarn
Fiber Content:	100% Olefin fibers
Pile Weight:	18 oz. per s/y
Total Weight:	86 oz. per s/y
Backing:	PVC Vinyl
Thickness:	3/8" (10mm)

Standard Sizes:

2' x 3' | 3' x 4', 3' x 5', 3' x 6', 3' x 10', 3' x 60' | 4' x 8', 4' x 60' | 6' x 60'

LIMITED WARRANTY

Full Commercial Warranty 1 year

Summary of Warranty

Products must be professionally installed to validate the warranty.

Langhorn Flooring Concepts Inc. (LFCI) warrants Olefin Commercial Matting against wear for a period of 5 years in a commercial application. This warranty applies only to material that is properly installed and maintained, while being used as intended and recommended. If the defect is covered by this warranty and is reported to LFCI within the Warranty period, LFCI will supply new material of same or similar grade to repair or replace the defective material.

Wear

Defined as complete removal of wear layer, pattern and color due to wear from normal traffic and maintenance. If the wear occurs within 5 years from date of purchase, LFCI will provide replacement materials or repair, of only the effected area.

Manufacturing Defects

LFCI warrants Olefin Commercial Matting materials are free from manufacturing defects and will replace defective floor covering and reasonable installation costs for a period of up to one [1] year from date of purchase. LFCI will not pay labor costs to repair or replace materials that defects were apparent before or at the time of installation.

Other Limitations

- This warranty is non-transferable
- Manufacturing defect must be reported within 3 months from date of purchase.
- This Warranty covers only properly installed & maintained floors
- LFCI excluded and will not pay for any consequential or incidental expenses.
- LFCI reserves the right of final judgment and may refuse claims in certain instances.

*For a copy of the full warranty please ask for a warranty sheet

ENVIRONMENT

Langhorn Flooring Concepts Inc. does not use any substances currently included in the SVHC (Substances of Very High Concern) list under REACH (Registration, Evaluation, Authorization and Restriction of Chemical substances) in any matting products. All PVC grid products are 100% recyclable.

IMPORTANT NOTICE

Sample swatches have been cut from an overall design; decoration and shade may vary.

NOTES:

YOUR AUTHORIZED SALES REPRESENTATIVE:

LFC_OLEFINMAT_100721

