

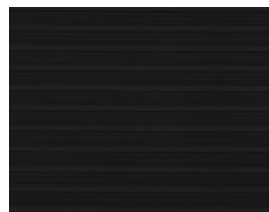
# Standard Anti-Fatigue Mat

ANTI-FATIGUE MATTING | 3/8" PVC SPONGE



## Built for strength, safety and performance.

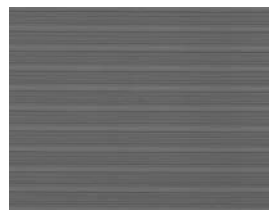
Keeping employees safe and comfortable increases productivity and reduces safety and injury risks. Our Standard Anti-Fatigue Mat's 3/8" thick vinyl construction provides a soft yet resilient surface designed to reduce standing pressure on joints, allowing workers to stand comfortably for longer. Fire and chemical resistant, Standard Anti-Fatigue Mat is the high-performance anti-fatigue matting solution for the most demanding industrial environments.



01. Solid Black (Ribbed)



02. Black with Yellow Border (Ribbed)



03. Grey (Ribbed)



01. Solid Black (Pebbled)



02. Black with Yellow Border (Pebbled)



03. Grey (Pebbled)

# Standard Anti-Fatigue Mat



ANTI-FATIGUE MATTING | 3/8" PVC SPONGE

### SUGGESTED USES

Pharmacies, Check-out Counters, Waiting Area, Industrial Area, Building Reception Area, Hostess Station, etc.

Construction: Closed-cell Expanded PVC Sponge  
Surface Aspect: Rib Emboss (Standard) or Pebble Emboss  
Gauge (± 10%): 3/8" (375mil)

Available Sizes: 27" x 3' | 27" x 5' | 2' x 3' | 2' x 60' |  
3' x 5' | 3' x 10' | 3' x 12' | 3' x 60' | 4' x 60'  
6' x 60' & custom sizes

### LIMITED WARRANTY

Full Commercial Warranty 1 year  
Summary of Warranty

Products must be professionally installed to validate the warranty. Langhorn Flooring Concepts Inc. (LFCI) warrants Standard Anti-Fatigue Mat against wear for a period of 5 years in a commercial application. This warranty applies only to material that is properly installed and maintained, while being used as intended and recommended. If the defect is covered by this warranty and is reported to LFCI within the Warranty period, LFCI will supply new material of same or similar grade to repair or replace the defective material.

#### Wear

Defined as complete removal of wear layer, pattern and color due to wear from normal traffic and maintenance. If the wear occurs within 5 years from date of purchase, LFCI will provide replacement materials or repair, of only the effected area.

#### Manufacturing Defects

LFCI warrants Standard Anti-Fatigue Mat materials are free from manufacturing defects and will replace defective floor covering and reasonable installation costs for a period of up to one [1] year from date of purchase. LFCI will not pay labor costs to repair or replace materials that defects were apparent before or at the time of installation.

#### Other Limitations

- This warranty is non-transferable
- Manufacturing defect must be reported within 3 months from date of purchase.
- This Warranty covers only properly installed & maintained floors
- LFCI excluded and will not pay for any consequential or incidental expenses.
- LFCI reserves the right of final judgment and may refuse claims in certain instances.

\*For a copy of the full warranty please ask for a warranty sheet

### FLAMMABILITY

Horizontal Burn Test (DOT FMVSS 302) Pass  
Methenamine Tablet Test (SPSC FF 1-70): Pass\*

\* Note: Product failed to burn long enough to reach the required 1.5" length to start test.

### MAINTENANCE

Standard Anti-Fatigue Mat can be mopped or wiped clean with a damp cloth.

### IMPORTANT NOTICE

Sample swatches have been cut from an overall design; decoration and shade may vary.

### NOTES:

---

---

---

---

---

---

---

---

---

---

---

---

---

---

---

---

---

---

---

---

---

---

---

---

### YOUR AUTHORIZED SALES REPRESENTATIVE:

LFC\_SAF\_100521

