

Snap Trax Plus Tile

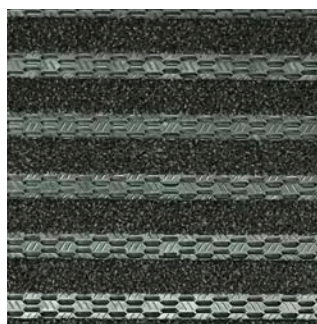
MODULAR VINYL + CARPET GRID SYSTEM



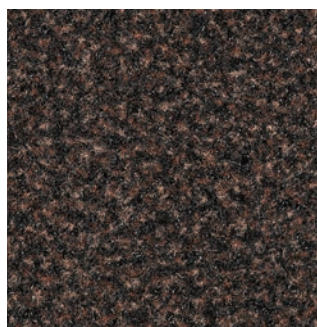
With an enhanced drying and scraping system, Snap-Trax is keeping entryways free of all dirt and debris.

Made from recyclable UV-resistant vinyl compound, Snap-Trax has an enhanced drying & scraping system that can be added into a larger Snap-Trax system. A dimensionally stable tile that will not shrink or gap while effectively scraping dirt and other debris from foot traffic.

- Patent pending locking clip to keep grids in place in high sheer locations.
- Interlocking 50cm x 50cm tiles allow versatility and customization for virtually any vestibule.
- Ability to link both carpeted and non-carpet versions in the same grid to offer better wiping/scraping in one system!
- Rugged vinyl capable of handling 600lb. rolling loads
- Dirt, and other debris fall through canals
- Vinyl compound is dimensionally stable in all environmental conditions



01. Grey (Stocked)



02. Brown (Custom)



03. Black (Custom)

Snap-Trax Plus Tile

MODULAR VINYL + CARPET GRID SYSTEM



SUGGESTED USES (NOT LIMITED TO)

Class-A Building Entrances, Grocery & Department Stores, Lobbies, Libraries, Office Environments, Retail Showrooms, etc.

SPECIFICATIONS

Snap-Trax with Carpet

Construction:	TPE/PVC
Total Height:	0.47"
Total Weight:	3.0 lbs
Insert Carpet:	18.70" x 1.38"
Tile Size:	19.69" x 19.69"
Tiles (19.69" x 19.69" ea.):	12 tiles per box (32.5 sq. ft.)

Snap-Trax without Carpet (also available)

Construction:	100% Pure Vinyl
Total Height:	0.47"
Total Weight:	3.82 lbs
Tile Size:	19.69" x 19.69"
Tiles (19.69" x 19.69" ea.):	20 tiles per box (54.18 sq. ft.)

Snap-Trax Clips

Clip Material:	304 Stainless Steel
Clip Color:	Black(Electro Coating)
Clip Size:	5.7" x 0.55"
Clip Thickness:	2mm
Clip Weight:	0.4kg

LIMITED WARRANTY

2 years - Ask for warranty sheet for details

MAINTENANCE

Vacuuming: Proper vacuuming is the single most important part of a preventive maintenance program. The following should be taken into consideration for how often to vacuum; Snap-Trax location, appearance expectations, type of vacuum equipment available, anticipated traffic upon each location, and soiling conditions prevalent to the location.

Spot Cleaning: For maintaining an appearance level, spots and stains can be the greatest challenge. The key to successfully removing a spot or stain is immediate action. This requires daily inspections. For a spill, blot immediately with a clean, white absorbent cloth, and work from the edge of the spot towards the center to help prevent it from spreading. Spots should be removed using an industrial grade spot remover. For oily stains a nonflammable dry cleaning solvent works best. When it comes to chewing gum, a can of freezing solution will easily break down the gum to be vacuumed away.

Periodic Maintenance (as needed): The Snap-Trax product allows for dirt and moisture to fall through to the surface underneath. This will require periodic cleaning by using the following process: remove the product to clean/sweep debris from within recess. Wash and scrub to remove any caked on debris. Vacuum carpets with heavy duty cleaning equipment that use rotating brushes. Use pile-lifting cleaning equipment to restore fibers to natural position.

For Restorative Carpet Cleaning processes please contact your Langhorn Flooring Concepts sales representative.

TECHNICAL SPECIFICATIONS

Friction (ASTM D-2047-96)	Wet .60
Standard Rolling Load	1000lbs/wheel
Fire Resistance (ASTM E648)	Class 1
UV Resistance	Utilizes recyclable, UV resistant PVC/TPE

ENVIRONMENT

Langhorn Flooring Concepts does not use any substances currently included in the SVHC (Substances of Very High Concern) list under REACH (Registration, Evaluation, Authorization and Restriction of Chemical substances) in any matting products. All PVC grid products are 100% recyclable.

LEED-NC

Version 3 IEQ Credit 5, 4.3 | MR Credit 4, 6

INSTALLATION

Preparation: Before commencing installation, visually check the area and remove any lumps or ridges in the base that may be present. Vacuum and/or sweep as needed.

It is recommended that the entrance flooring system be installed as one of the final jobs to avoid damage associated with general building works. Unpack and inspect all materials to ensure they are free from transport damage. Check all components and tools required are available. Unroll/unpack the sections of matting and lay in a clean dry protected area to acclimatise and relax. Depending on duration of storage and ambient temperature, this process may take up to 24 hours. A heat gun can be used to aid relaxation of matting. When handling the rolls or large panels of matting at any time during the installation, avoid dragging or rough handling that may cause stretching or distortion.

Tools Required: Square, utility knife, a drill with 1/8" and 5/16" bits, a #2 phillips fastener and a tape measure.

IMPORTANT NOTICE

For more information on how to install Snap-Trax in your space, contact your Langhorn Flooring Concepts sales representative.

YOUR AUTHORIZED SALES REPRESENTATIVE:

LFC_SNAPTRAXPLUS_100821

Langhorn
Flooring Concepts