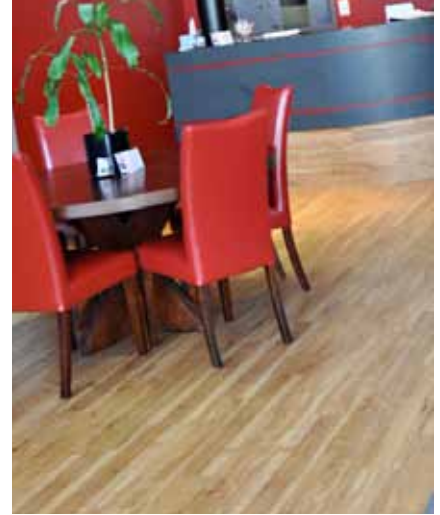


Nature's Edge

Luxury Vinyl Wood Planks



Our Nature's Edge, Luxury Vinyl Wood Planks come in two distinct collections. The "Rustique" Collection is produced in a 6" wide plank with 4 gorgeous weathered color patterns. The "Forest Grove" Collection is available in 6 color patterns of attractive wood species. All flooring planks are available in 36" length.

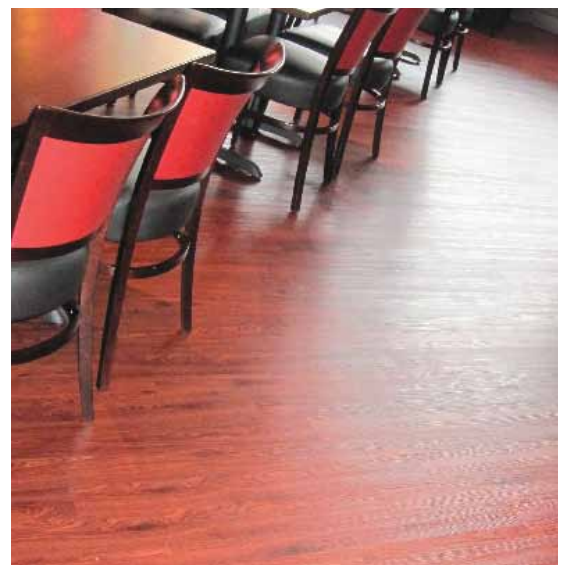
These two Collections offer the perfect combination of durability, attractive design, and safety. They have a wide range of wood tones from light to medium and dark.

Our flooring is produced with pure ingredients with the latest manufacturing technology. Both Collections are constructed with a triple vinyl lamination. They have a strong vinyl backing, a vinyl print layer and a tough, durable wear layer. The heavy gauge backing and annealed construction offer excellent dimensional stability, while the tough vinyl wear layer ensures stain and wear resistance.

Nature's Edge has the look and the texture of natural wood while providing an easy to install, easy to maintain and clean floor system.

Nature's Edge Collections are perfect for Supermarkets, Beauty Salons, Conference Rooms, Cafeterias, General Offices, Resorts, Hospitals, Health Clubs, Restaurants, Spas, Libraries, Department Stores, and Retail Stores to name a few ideal applications.

We offer a 20 Year Residential and 10 Year Commercial Limited Guarantee on our Nature's Edge Collections. Contact us for complete warranty details and limitations.



NATURE'S EDGE PRODUCT SPECIFICATIONS

"RUSTIQUE" COLLECTION

6" WIDE, 40 MIL WEAR SURFACE, 3 LAYER LAMINATE CONSTRUCTION



NE2166 Country Wood



NE5466 Scarlet Teak



NE6401 Black Walnut



NE5971 Dark Chestnut

PRODUCT COMPOSITION STANDARD / NORMS DATA

Manufacturing Standard ASTM F1700 Class III Type A & B
Construction: Natures View Style Rustique Luxury Vinyl Plank

PRODUCT DIMENSION

Size (Plank) 6"x36"
Overall Thickness ASTM F1700 (ASTM F386) .125" (3.175mm)
Wear Layer Thickness (Plank & Tile) EN429 .040mil (1.0mm)
Tile Squareness ASTM F1700 (F-2055) Pass
Weight per piece (Plank) 6"x36" 1.75lbs.

PROPERTIES

Stability EN 986 Pass
Abrasion Resistance EN660 Excellent <0.15 weight loss after 1,000 cycles
Static Load Limit ASTM F970 750psi
Sound Insulation DIN52210 4dB
Static Coefficient of Friction ASTM D 2047 (Slip Resistance):0.52 ADA Compliant
Resistance Chemical ASTM F 925 Pass (Excellent)
Resistance Light F 1515 Pass
Residual Indentation F 1914 Pass<Less than 8%

FLAMMABILITY RATING

Radiant Panel Test ASTM E648 Class 1
Smoke Density ASTM E662 (NFPA258) Pass <450
Heat Stability ASTM F1514 Pass
HUD/FHA Requirements Exceeds

"FOREST GROVE" COLLECTION

4" WIDE, 20 MIL WEAR SURFACE, 3 LAYER LAMINATE CONSTRUCTION



NE1010 Henna Oak



NE1011 Chestnut Brown Oak



NE1012 Pure Oak



NE1013 Honey Oak



NE1014 Caramel Oak



NE1015 Light Oak

CONSTRUCTION

Size	4"x36"
Overall Thickness	3.0mm
Wear Layer Thickness	0.50mm/20mil

PERFORMANCE

Abrasion Resistance	ASTM D-3889	0.300kg
H-18 Calbrau, Wt Loss kg/5000cycle		
Fire Resistance	ASTM E-648	Class 1
Smoke Density	ASTM E-662	<450 sdi
Flammability	ASTM E-84-01	Passed
Slip Resistant	ASTM F-2047	> 0.45
Stain and Chemical Resistance	ASTM F-825	Excellent
Heat Stability	ASTM F-1514	Passed
Dimensional Stability	ASTM F-540	Passed
Static Load Limit	ASTM F-970	<250 psi
Residual Indentation@750 psi 24hr		

INSTALLATION

Surface Preparation- subfloor (wood or concrete) must be structurally sound, clean, smooth, dry, free from dust, dirt, wax, grease, and/or any other foreign material that would interfere with a good bond. DO NOT USE adhesives where moisture is present in the concrete or wood-type subfloors. Moisture may retard or prevent adhesive from properly setting.

TO PUT OUR FLOORING TO WORK FOR YOU CONTACT: